

2024-2025 ISED Annual Report

BELIEVE IN DIFFERENT



CAN
HEALTH
NETWORK

We would like to acknowledge that the Coordinated Accessible National (CAN) Health Network is made up of organizations from coast-to-coast-to-coast that are situated on the traditional territories of many diverse Indigenous Peoples of Canada. As an organization on a mission to bring Canada together to create economic prosperity and better health for all, we are committed to working in the spirit of reconciliation, appreciation, and collaboration.

CONTENTS

01	ABOUT THE CAN HEALTH NETWORK	4
02	MESSAGE FROM THE CHAIR	5
03	2024-2025 YEAR IN REVIEW	6
04	SCALING IN ACTION	12
05	CELEBRATING CANADA'S INNOVATORS	16
06	EQUITY, DIVERSITY & INCLUSION	19
07	FINANCIAL SUMMARY	21
08	PROJECT SPOTLIGHTS	24
09	PROJECTS COMPLETED IN 2024-2025	29
10	NEW PROJECTS LAUNCHED IN 2024-2025	31
11	LOOKING AHEAD	37

01

ABOUT THE CAN HEALTH NETWORK

The Coordinated Accessible National (CAN) Health Network brings together the country's leading health care operators and Canadian entrepreneurs from coast-to-coast-to-coast with a shared mission: to accelerate the adoption of Canadian technology that drives economic growth, supports homegrown innovation and improves patient care.

Through Canada's first and only pan-Canadian integrated marketplace focused on health care innovation, Canadian companies with proven solutions can commercialize, grow and expand in Canada, and globally.

It is more important than ever for Canada to build a united and resilient economy that supports innovation, job growth and the well-being of all Canadians.

Let's build a stronger Canada, together.

canhealthnetwork.ca

MESSAGE FROM THE CHAIR



I am pleased to share the CAN Health Network's 2024-25 Annual Report on the Innovation, Science and Economic Development (ISED) Canada grant, highlighting our progress toward driving economic growth and resilience, and advancing better health for all Canadians.

Today's reality makes it more clear than ever: we must invest in Canada first, not just for today, but for the future. And this year, the CAN Health Network has proven that when we bet on Canadian innovation, we all win.

But this is about more than innovation. It's about making a deliberate choice to build our economic future here at home.

The CAN Health Network is demonstrating what's possible when we create an integrated, Canadian marketplace that prioritizes homegrown solutions. We are not just supporting innovation - we are strengthening the economy, creating high-value jobs, improving the health care system, and reinforcing our sovereignty by keeping Canadian intellectual property in Canada.

Across the country, Canadian companies are solving some of our health system's most pressing challenges. Through the Network, we've helped these companies grow, scale and become vital partners in delivering better care. From our expansion into Quebec to our collaboration with the First Nations Health Authority to advance Indigenous health innovation and equity, we are building momentum that is both national and inclusive.

This year we held our first in-person Annual Conference, bringing together leaders, innovators and health care operators from across Canada, and encouraged everyone to challenge the status quo and unite the country around a shared vision. Together, we are building an integrated marketplace that makes it easier to fuel economic growth, create jobs, and ensure better health for all Canadians.

The results are clear: now is our time to act. Together, let's build a stronger, more self-reliant Canada. Let's stop settling for business as usual. It's time to **believe in different**.

A handwritten signature in black ink, appearing to read 'Dante Morra'.

- Dante Morra, Founder & Chair

03

2024-2025

YEAR IN
REVIEW

BY THE NUMBERS

11

Successful post-project procurements in 2024-25

4

Projects launched in Indigenous Communities and the Territories

500M+

In revenue generated to date

*Under ISED Agreement

16

Calls for Innovation posted

38

New projects launched

30

New Canadian companies supported through projects

1394

Jobs created to date

*Under ISED Agreement

A YEAR OF MANY FIRSTS



First Indigenous Edge partnership with First Nations Health Authority



First year of the CAN Health LTC Innovation & Scaling Network and Community of Practice



First project launched in the Yukon



First five projects and official expansion into Quebec



First in-person Annual Conference



First Triple-Edge Project - three Edges from three different regions running commercialization projects with the same Canadian company at the same time

OBJECTIVES & MILESTONES

GOVERNANCE

The CAN Health Network has expanded its Board of Directors to include representation from across Canada. This year, new additions to the CAN Health Network Board of Directors include:

- Dr. Alika Lafontaine, MD, FRCPC, Indigenous Physician, Former President, Canadian Medical Association
- Kathy Malas, Director of Quality, Innovation and Value, Director of OROT and Chief Artificial Intelligence Officer at CIUSSS du Centre-Ouest-de-l'Île-de-Montréal
- Gerri Sinclair, Chief Prioritization, Planning and Performance-Optimization Officer at YVR Vancouver Airport Authority (VAA)
- Peggy Taillon, Vice-President, Strategy, Engagement, Communications, Development and Integration, Bruyère Health

EXPANSION

We are proud to have expanded the Network to over 50 leading health care operators (Edges), representing a powerful cross-section of Canada's health care system. Our growing Network now includes a diverse mix of health care providers, from rural and remote hospitals and health authorities, to long-term care homes, organizations that operate in the primary care sector, pharmacies and laboratories. This evolution strengthens our ability to support innovation that meets the needs of patients and providers in every setting, across every region.

In October 2024, the CAN Health Network announced its partnership with First Nations Health Authority (FNHA), which provides health care to First Nations communities across British Columbia. FNHA is currently running two projects designed to improve access to care for First Nations communities in British Columbia. CAN Health continues to engage with leaders in the Northwest Territories and Nunavut.

In November 2024, CAN Health received its first ministerial approvals from the Government of Quebec to officially launch projects with public hospitals in the province of Quebec. To date, CAN Health has launched five projects in Quebec and continues to engage stakeholders to support its activities in the province.

DATA

The CAN Health Network has built a robust network of Edges, companies, partners, and stakeholders. Using internal tools, CAN Health is able to manage and track relationships with hundreds of entities to ensure we have a thriving pipeline of activity for both projects and sustainability efforts. CAN Health has also developed a new software platform that is designed to be Canada's digital health marketplace for discovering the best in Canadian digital health and medtech.

OBJECTIVES & MILESTONES

STRATEGY This year, the CAN Health Network deepened its strategic partnerships with leading organizations including EY, LifeLabs, Rogers, Shoppers Drug Mart and Torys LLP. These partners play a critical role in strengthening Canada's innovation ecosystem by bringing commercial expertise, national reach, market access and system-level insight to the Network. Together, we are scaling the CAN Health model, accelerating the adoption of Canadian technologies, and building a more self-sustaining, collaborative, and competitive health care system across the country.

The CAN Health Network continues to work with Edges and partners to develop a strategy to increase engagement with Indigenous innovators and communities, and expansion to Nunavut and the Northwest Territories.

OPERATIONS The Atlantic, Northern, Ontario, Western and Quebec regions continue to enhance national operations and administration by strengthening interregional collaboration. These efforts are focused on breaking down barriers, improving cross-functional integration, and fostering a more cohesive, efficient approach across the CAN Health Network.

SUSTAINABILITY The CAN Health Network is advancing a phased strategy to deepen impact and ensure long-term sustainability:

Strengthen National Collaboration

Continue expanding relationships and engagement efforts across the country, bringing together a range of stakeholders to support shared priorities in health innovation.

Unlock Network-Wide Value

Activate new opportunities across the Network that create value for all members of the Network. This includes supporting initiatives that align with evolving system needs and fostering environments that enable collaboration, learning and bringing new Canadian innovations to scale.

Evolve for Long-Term Impact

Explore a range of approaches that contribute to the Network's continued growth and sustainability. This includes the identification of new forms of support, partnerships, and potential opportunities to expand reach and impact.

UNITED FOR A STRONGER CANADA

This year, the CAN Health Network emphasized the importance of uniting the country to build a stronger, more resilient economy - one that puts Canadian innovation at the centre of our health care system.

We released the “Dear Canada” letter, a powerful call-to-action uniting nearly 90 health care operators, entrepreneurs and partners from across the country. This collective show of support underscores a national commitment to working together to strengthen our economy and accelerate Canadian health innovation.

We also introduced our first-ever procurement lookbook - *Made In Canada For Canadians* - a collection of proven, validated ready-to-buy solutions from Canadian companies already delivering impact in real world settings.



[Read More](#)



[Read More](#)

The Lookbook is updated on an ongoing basis as projects reach completion and companies are successfully procured, ensuring the content remains current and reflective of the latest Network activity.

CAN HEALTH LTC INNOVATION & SCALING NETWORK

Powered by



- In its first year, this Network has generated **\$2.2M in revenue** as a result of CAN Health projects
- Over **133** LTC homes have procured a CAN Health-supported innovation
- The LTC Innovation & Scaling Network reaches over **1,000 LTC homes**

NETWORK ACTIVITIES

The Network officially completed its first year of the CAN Health Long-Term Care (LTC) Innovation & Scaling Network - a national initiative focused on improving the lives of LTC residents and operators by connecting homes with proven Canadian technologies that address real-world challenges in the sector. Since its launch, the Network has generated \$2.2M in revenue as a result of CAN Health projects.

As part of this initiative, we established the Long-Term Care Innovation Community of Practice (CoP) - co-led by Bruyère Health and CAN Health - to create a space for LTC leaders and decision-makers to come together, share insights, and support one another in navigating and adopting innovation. The CoP empowers members to explore Canadian-made solutions, exchange success stories, and drive forward a culture of innovation in long-term care.

GROWING OUR REACH

The Community of Practice (CoP) now includes 552 LTC homes across Canada - representing 26% of all homes nationally. For the first time, the CoP includes members from all 10 provinces. We've also engaged 10 strategic scaling partners, including provincial associations and national organizations, who help extend our reach by sharing stories, introducing promising solutions, and referring LTC homes to join the Network. With their support, CAN Health content and solutions now reach over 1,000 LTC homes across the country.

04

SCALING IN ACTION

ADVANCING WOUND CARE TREATMENT

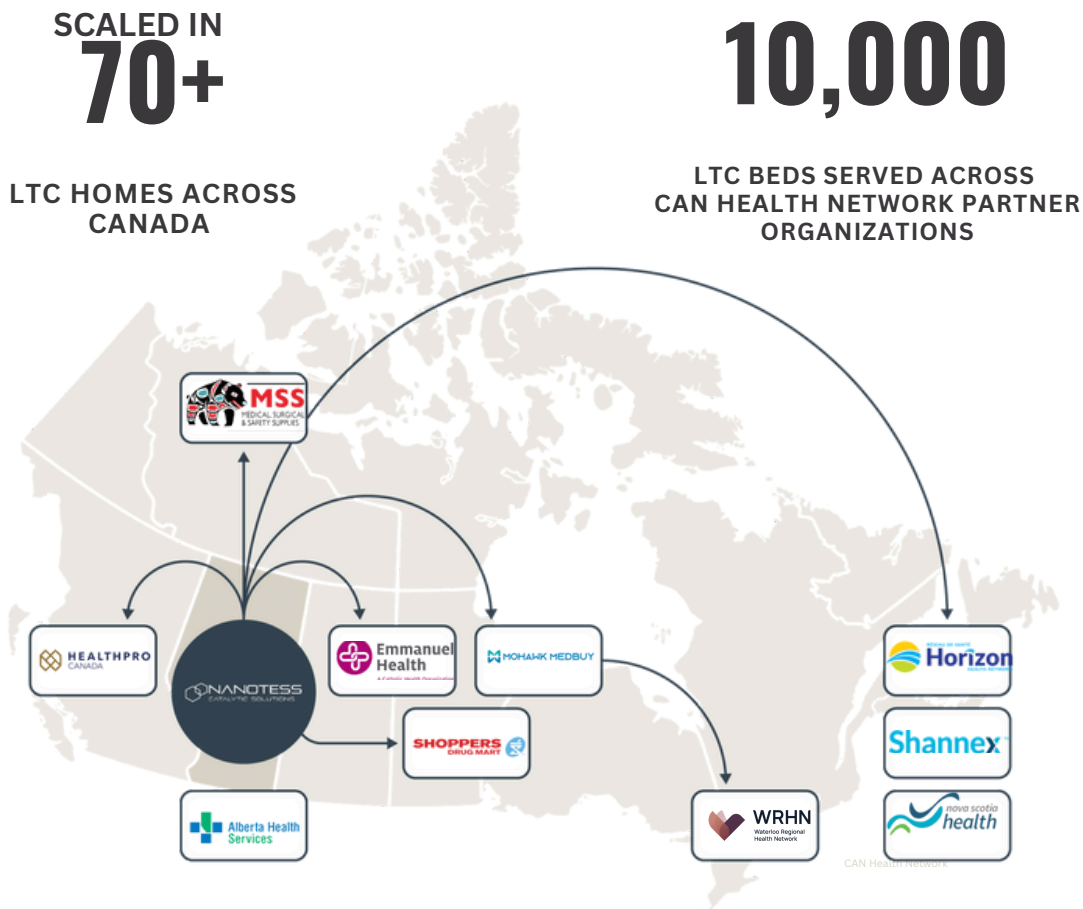


NanoTess is an Alberta-based material science company leveraging nanotechnology to develop advanced health care solutions, with a focus on wound healing. Its flagship product, NanoSALV, accelerates healing, reduces infections, and **improves outcomes for chronic wounds** such as pressure injuries, venous leg ulcers, and diabetic foot ulcers.

Following a successful CAN Health Network commercialization project at Alberta Health Services, NanoTess' solution has been introduced to other health care providers in the Network across the country, including 70+ long-term care homes, and has also secured national contracts with Shoppers Drug Mart, HealthPRO Canada, Mohawk Medbuy Corporation and Medical Surgical & Safety Supplies Ltd.

Since its CAN Health Network project, the company has grown from **6 to 21 employees**, has moved into a new facility (representing 7x manufacturing capacity), and is projected to see an **increase in annual revenue from \$500k to \$1.5M**.

SUCCESS IN LONG-TERM CARE:



EMPOWERING PATIENTS THROUGH THEIR CARE JOURNEY

SeamlessMD

SeamlessMD is a Toronto-based digital patient engagement platform that helps providers enhance surgical and chronic care outcomes by guiding patients through their care journey with personalized education, remote monitoring and two-way communication.

Since completing its initial CAN Health project with Trillium Health Partners, SeamlessMD has also been procured by other members in the Network including Grand River Hospital, Horizon Health Network, and Vancouver Coastal Health.

Horizon's project with SeamlessMD allowed them to equalize the levels of care for patients across New Brunswick through the New Brunswick Heart Centre, which expanded into other clinical areas and led the way for Vitalité Health Network to deploy it in other pathways.

After joining CAN Health in 2022, SeamlessMD's Ontario hospital market share surged from 19% to 51%, and continues to grow.

47%

REDUCTION IN EMERGENCY VISITS

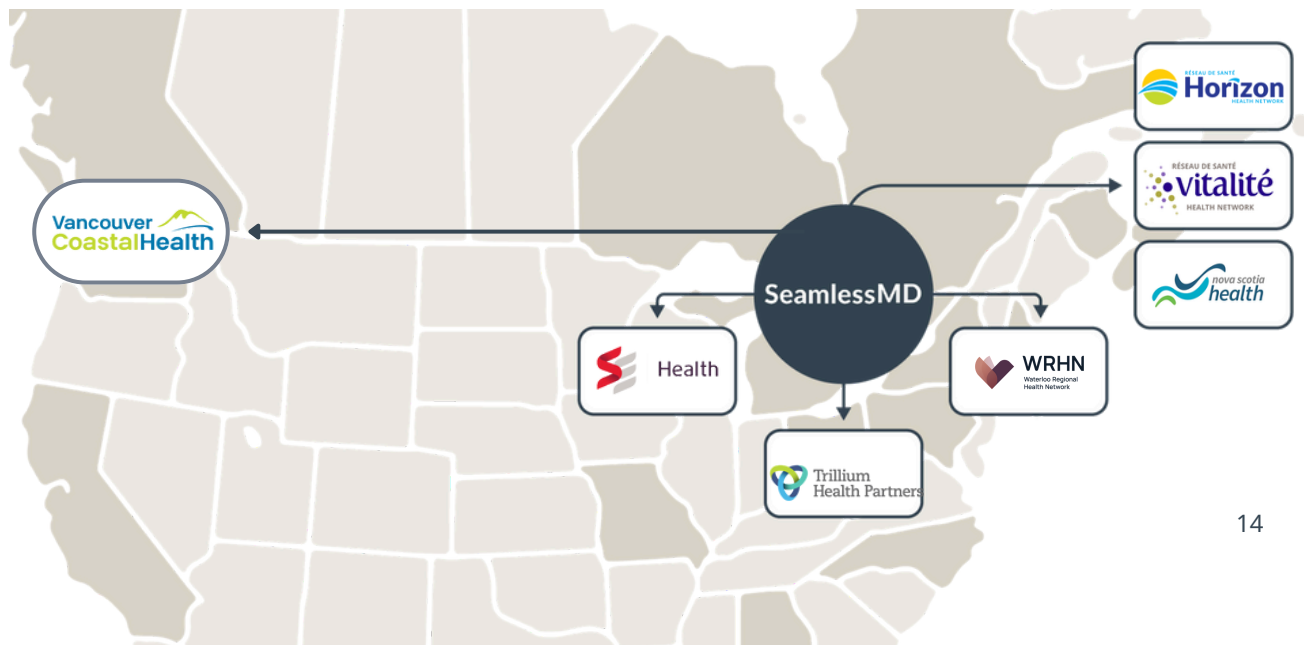
50%

OF CANADIAN PROVINCES NOW USING THE SOLUTION

\$1.5M

ESTIMATED COST SAVINGS ANNUALLY

NEW BRUNSWICK HEALTH SYSTEM



ACCELERATING SPECIALIST ACCESS AND REDUCING REFERRAL WAIT TIMES

Virtual Hallway 

Virtual Hallway is a Nova Scotia-based telehealth platform that enables virtual and phone-based consultations between primary care providers and specialists - **reducing wait times**.

Since joining the CAN Health Network, Virtual Hallway has seen **14x revenue growth** (resulting from provincial procurement).

As a result of its CAN Health project with Nova Scotia Health, Virtual Hallway is available to clinicians across the province to reduce system waitlists.

Now, we are in the process of exploring further opportunities for provincial deployments of Virtual Hallway, including in New Brunswick, Québec, Ontario, and Saskatchewan.

1,000+

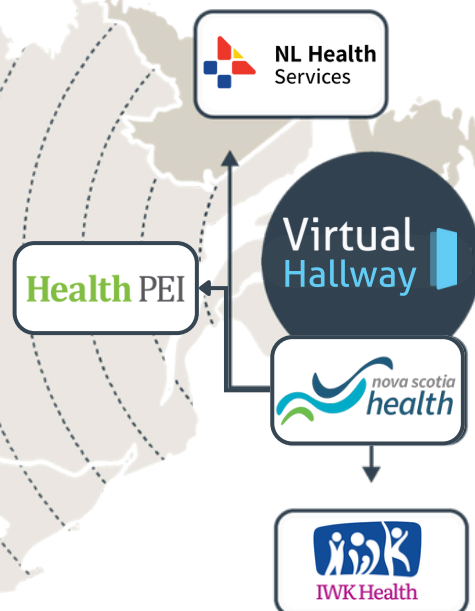
PHYSICIANS & NURSE
PRACTITIONERS USING
VIRTUAL HALLWAY
ACROSS CANADA

84%

OF VIRTUAL
HALLWAY
CONSULTATIONS
AVOIDED THE NEED
FOR A TRADITIONAL
SPECIALIST
REFERRAL

AVERAGE WAIT TIME
FOR CONSULTATION
REDUCED FROM ONE
MONTH TO

5.8 Days



05

CELEBRATING CANADA'S INNOVATORS

Established in 2021, the CAN Health Network Awards recognize the Edges, companies, partners, and individuals in the Network who are transforming health care in Canada and leading the new health care economy.

T I O N I A N O V O T I O N I N N O V A
I N N O V A T H E N I N E T W O R K O N
O V A T I O N I A W A R D T I O N I N N
T I O N I A N O V O T I O N I N N O V A
I A C O M P A N Y N I O F O V T H E O N
N O V Y E A R N N A W A R D O T O N I A
V O T I O N I N N O V A T I O N I A N O
N I N N O V E D G E N I O F O V T H E O
O T O N I A N O V Y E A R T N A W A R D
I N N O V A T I O N I A N O V O T I O N
A T R A I L B L A Z E R I O A W A R D V
I A N O V O T I O N I N N O V A T I O N
O N I S H A P E T I O N T I O N I N N V
T I O N I A W A R D T I O N I N N O V A
V A T I O N V O T V O N I N N V O N T I
N O V A T I O W E S S I N G E R O N I N
O V T T I O N I A W A R D T I O N I N N
I N N O V A T I O N I A N O V O T I O N

THE NETWORK AWARD

The CAN Health Network's highest honour. Recognizes an Edge and company who clearly demonstrate the power of collaboration in advancing Canada's health care system and supporting Canadian innovation.



Virtual Hallway

COMPANY OF THE YEAR AWARD

Recognizes the CAN Health Network company that achieves outstanding results during the project lifecycle and beyond. The selected company also demonstrates how the CAN Health Network model succeeds in breaking down barriers to help Canadian companies reach their fullest potential.



EDGE OF THE YEAR AWARD

Recognizes the health care organization that exemplifies what it means to be an Edge: consistently engaging and participating in CAN Health Network initiatives at all levels of the organization and demonstrating a commitment to solving challenges with Canadian innovation.



NL Health Services

TRAILBLAZER AWARD

Recognizes the CAN Health Network member who demonstrates exceptional leadership within the Network and stands out as a powerful voice in the health care industry; someone who continues to challenge the status quo.



James Hiebert,
President of MSS

SHAPE AWARD

A new award created to showcase the power of the CAN Health Network model – the integrated marketplace - by recognizing an individual who is leading this change outside of health care.



innovate BC

Lucie Hiltner, Managing
Director, Integrated
Marketplace, Innovate BC

WESSINGER AWARD

In recognition of Mike Wessinger and Dave Wessinger's visionary leadership and investment in Canada.

PointClickCare®
Mike Wessinger & Dave
Wessinger, PointClickCare

06

EQUITY, DIVERSITY & INCLUSION

EQUITY, DIVERSITY & INCLUSION

In alignment with our mission to bring Canada together to create economic prosperity and better health for all, CAN Health recognizes that diversity in leadership is not only a reflection of societal demographics but a strategic asset that enhances our organization's effectiveness and resilience.

CAN HEALTH NETWORK BOARD OF DIRECTORS

CAN Health has taken steps to ensure the Board of Directors is composed of individuals from diverse racial, gender, and cultural backgrounds, ensuring a wide range of perspectives in its decision-making processes.

The CAN Health Network Board maintains a balanced composition, with 50% female representation, in alignment with the gender diversity criteria set forth by the Government of Canada. We have also recruited and approved our first Indigenous Board member.

Our commitment to diversity extends beyond board composition. We actively seek to understand and address the unique needs of the communities we run projects in, ensuring that our strategies and initiatives are inclusive and equitable. This approach not only strengthens our organizational culture but also builds trust and credibility with our stakeholders.

A FOCUS ON INDIGENOUS INCLUSION

This year, a key focus for CAN Health has been to address the challenges Indigenous people face accessing health care, resulting in poorer health outcomes and disparities in care. These challenges are rooted in a complex exchange of historical trauma, systemic racism, geographic isolation, and cultural insensitivity. Through our project work with First Nations Health Authority, the Virtual Health Hub, West Haldimand General Hospital and Yukon Hospital Corporation, CAN Health is actively working to be a partner in improving health care for Indigenous communities.

FEMALE-LED/OWNED COMPANIES IN THE NETWORK

Our Network now includes 18 female-led or owned companies, reflecting our continued growth and commitment to equity.

07

FINANCIAL SUMMARY

FINANCIAL SUMMARY

Cost Category	Government of Canada	In-Kind Contributions	Total Eligible Costs
Salaries & Wages	\$ 5,394,192	\$ 8,234,154	\$ 13,628,346
Equipment & Facilities	\$ 537,177	\$ 1,294,093	\$ 1,831,270
Materials & Supplies	\$ 409,862	\$ 543,054	\$ 952,916
Travel, Meals & Accommodation	\$ 109,835	\$ 99,551	\$ 209,386
Dissemination & Translation	\$ 215,734	\$ 140,012	\$ 355,746
Other Direct Costs	\$ 2,811,736	\$ 3,280,594	\$ 6,092,330
Outreach & Administration	\$ 961,383	-	\$ 961,383
Total	\$ 10,439,919	\$ 13,591,458	\$ 24,031,377

Funding & financial notes

Communitech Corporation has provided Board-approved, audited financial statements to ISED for the year ending March 31, 2025. Financial statements were audited by KPMG.

The financial controls of Communitech Corporation operate as intended. Confirmation was provided by KPMG for the year ending March 31, 2025.

All operating and administrative expenses incurred for this project have been funded with project funds allocated to the reporting period ending March 31, 2025.

No employee or director receives compensation exceeding \$300,000 per year.

ADDITIONAL INFORMATION

No updates to existing investment policies, standards and procedures occurred during the reporting period.

No member disputes occurred during the reporting period.

Network data security

The Communitech Corporation team ensures the ongoing integrity, redundancy, retention and disaster recovery systems, policies and procedures are in place. Communitech and the CAN Health Network adhere to all privacy and personal information requirements including PIPEDA. Key hardware and software vendors supporting the CAN Health Network IT systems include Cisco and AWS services.

08

PROJECT SPOTLIGHTS

AGILE SUPPLY CHAINS THROUGH 3D PRINTING



THE CHALLENGE

Horizon Health Network faced rising costs, equipment damage, and inefficient pre-op workflows that impacted patient care and staff productivity.

THE SOLUTION

PolyUnity's i3D.Health platform streamlines 3D medical modeling, enabling custom tools, integrated ordering and secure data handling.

THE RESULTS

- **Engaged 24 departments and 100+ facilities.**
- **Delivered 93 parts**, improved surgical precision, reduced OR times, boosted patient satisfaction.
- **Achieved cost savings** through on-demand manufacturing.

"PolyUnity continues to be a fantastic partner in helping organizations like Horizon move forward to build supply chain resilience, decrease procurement costs, and enhance patient care."

-Jennifer Sheils, VP Strategy & CIO, Horizon Health Network



AI-LED TRIAGE FOR INFO-SANTÉ NURSES

Centre intégré
universitaire de santé
et de services sociaux
du Centre-Ouest-
de-l'Île-de-Montréal

Québec 



THE CHALLENGE

Quebec's Info-Santé 811 faces high call volumes, long wait times, staff shortages, and inefficient triage, often resulting in unnecessary ER visits and limited care access.

THE SOLUTION

Vitr.ai's Navig platform uses AI to support non-clinical staff in triaging patients by analyzing their own words and directing them to the right professional in the right timeframe while identifying patients requiring a nurse-led evaluation. This enables faster access, reduces emergency visits, and improves overall system efficiency while freeing up nurses to handle more complex cases.

THE RESULTS

- **Shorter Wait Times:** Average call wait times dropped from 55 minutes to 13 minutes.
- **Higher Call Volume:** Daily call handling capacity increased by 17%.
- **Faster Call Resolution:** Average call duration decreased from 27 minutes to 6 minutes.

"In recent years, several provinces have invested in what are known as 'digital front doors'. Too often, these have led to fragmented care — or no care at all. What Canadians need is simple: timely, relevant care delivered by the team that knows them best, no matter which 'door' they use to enter the system, including the 8-1-1".
-Alexandre Chagnon, CEO,
[Vitr.ai](#)



AI DISCHARGE PREDICTOR



SIGNAL 1

THE CHALLENGE

Rising inpatient lengths-of-stay are straining hospital capacity due to inefficiencies in identifying and coordinating discharges for clinically stable patients.

THE SOLUTION

Signal 1's AI tool predicts which patients will be stable within 72 hours, enabling care teams to prioritize discharge and reduce avoidable hospital days.

THE RESULTS

- **Accelerated** patient flow by reducing the time from discharge readiness to actual discharge by 12 hours, resulting in 397 bed days saved over three months.
- **Improved discharge timing**, with a higher percentage of patients going home within 4 days after being identified as ready for discharge.
- **Enhanced care coordination** by supporting clinical teams with clearer discharge signals, making it easier to plan ahead and move patients through the system more efficiently.

“Working with the Signal 1 team to enhance and boost the accuracy and specificity of the model has been a great experience thus far, and has allowed our team to leverage the model to revamp the current discharge planning process to better serve our dynamic patient population and community.”

-Evona Dindyal, RN,
Medicine Navigator



REAL-TIME LOCATION & ALERT SYSTEM FOR RETIREMENT LIVING



THE CHALLENGE

Many senior living facilities rely on traditional nurse call systems that were not designed for today's real-time care needs, creating opportunities to improve response times, safety, and care coordination.

THE SOLUTION

Zodiac Light Waves' real-time location and alert system offers automated fall detection, contact tracing, and faster response times, all integrated with existing infrastructure to enhance resident safety and care.

THE RESULTS

- **Faster Emergency Response:** Fall detection and location tracking allow staff to quickly locate and assist patients in need.
- **Seamless Team Communication:** Upgraded phones improve coordination, boosting efficiency and patient care.
- **Full Facility Coverage:** Extended portable phone range ensures reliable communication throughout the entire building.

"We have not only addressed the initial requirements but have also provided additional value with innovative solutions that set new standards in health care communication systems."

*-Hesam Mehdavi, CEO,
Zodiac Lightwaves*



09

PROJECTS COMPLETED IN 2024-2025

PROJECTS COMPLETED 2024-2025

A total of 11 procurements were completed this year, including several stemming from projects initiated in previous years.

Edge	Company	Project Description	Procurement
Bruyère	Managing Life	Improving Chronic pain	Procured
Bruyère	Canada MedCart	Medical Cart Solutions for LTC	Not procured
CASA	Expeflow	Digital Incident Management Tool	Procured
Covenant Health	Guusto	Health Workforce Recognition Platform	Procured
Covenant Living	Zodiac Light Waves	Real-Time Location & Alert System for Retirement Living	Procured
Emmanuel Health	NanoTess	NanoSALV - Chronic Wound Management in LTC	Procured
Waterloo Regional Health Network	Signal 1	AI Discharge Prediction and Nurse Scheduling	Not procured
SE Health	Welbi	Recreation Platform for Reduced Social Isolation	Procured
St. Joseph's Healthcare Hamilton	Aetonix	Virtual Rehabilitation for Chronic Obstructive Pulmonary Disorder (COPD)	Not procured
SickKids	Orchid Analytics	OR Scheduling GUI	Not procured
Shannex	Blanc Labs	Employee Onboarding Automation	Procured
Shared Health Manitoba	PolySense Solutions	Refrigerated Research Equipment Remote Monitoring	Procured
Sinai Health	Agota Health	Nurse Agency Management Software	Procured
Trillium Health Partners	DCM	Mobile Digital Sign Boards to Drive Innovation and Awareness	Procured
Trillium Health Partners	Signal 1	AI Discharge Predictor	Procured

*Procurements beyond the initial project activities evolve over time. For the most current updates on procurement, scale, and growth, please refer to the CAN Health Lookbook available on our website.

10

NEW PROJECTS LAUNCHED IN 2024-2025

NEW PROJECTS LAUNCHED IN 2024-2025

ONTARIO

On average, the CAN Health Network funds \$100,000 per commercialization project. The total project budget also includes in-kind and partner contributions.

EDGE	Company	Project Description	Project Budget
Brightshores Health System	EmergConnect	ED Triage	\$509,200
Brightshores Health System	PatientCompanion	Digital Nurse Call Bell System	\$279,619
Bruyère Health	Careteam Technologies	At-Home Transition Digital Platform	\$697,839
CHEO	RxFood	Improving Nutrition Using AI	\$443,231
Waterloo Regional Health Network	Hygienic Echo	Hand Hygiene Compliance	\$297,365
Waterloo Regional Health Network	PatientCompanion	Improving Nurse Call in Mother Baby Unit	\$279,619
Waterloo Regional Health Network	Distributive	Optimizing Surgical Scheduling Efficiency	\$88,837
Hamilton Health Sciences	MIMOSA	Early Detection & Prevention of Pressure Injuries	\$215,900
HealthOne Inc.	Tali AI	Primary Care AI Scribe	\$211,798
One Heart Care	Myant Inc.	Improving Holter Monitoring	\$190,489
Royal Victoria Regional Health Centre	GoAutomateMD	Improving eReferral Management	\$1,290,654
St. Joseph's Healthcare Hamilton	BookJane	Shift Fulfillment Application	\$440,485

NEW PROJECTS LAUNCHED IN 2024-2025

ONTARIO

On average, the CAN Health Network funds \$100,000 per commercialization project. The total project budget also includes in-kind and partner contributions.

EDGE	Company	Project Description	Project Budget
Trillium Health Partners	Myant Inc.	Innovative Telemetry through Solutions Clinic (Holter Monitors)	\$1,018,115
Trillium Health Partners	DATA Communications Management Corp.	Mobile Digital Sign Boards to Drive Innovation and Awareness	\$304,118
Trillium Health Partners	Mentor City	Nursing Mentorship	\$643,898
Trillium Health Partners	FirstHx.	Improving Medical History Intake	\$470,250
Unity Health Toronto	FluidAi	Detecting Anastomosis Leaks	\$450,000
Unity Health Toronto	Electronic Asthma Management System (eAMS)	Asthma Disease Management & Clinical Decision Support System Tool	\$423,018
Unity Health Toronto	Vena Medical	Microangioscope Stroke Detection	525,000
University Health Network (UHN) - Michener Institute	Lumeto	Virtual Simulation for Training	\$465,950
University Health Network	Medly	Collaborative Design of a Remote Management Module for Cardio-Renal-Metabolic Care	\$466,758
University Health Network	Able Innovations	Medical Devices for Patient Transfer	\$265,023
West Haldimand General Hospital	EmergConnect	Improving ED Triage	\$226,525

NEW PROJECTS LAUNCHED IN 2024-2025

WEST/NORTH & INDIGENOUS

On average the CAN Health Network funds \$100,000 per commercialization project. The total project budget also includes in-kind and partner contributions.

EDGE	Company	Project Description	Project Budget
Covenant Health	Guusto Gifts Inc.	Health Workforce Recognition Platform	\$250,000
Emmanuel Health	NanoTess	NanoSALV - Chronic Wound Management in LTC	\$210,537
Fraser Health Authority	Tochtech	Toch Sleepsense - Next Generation Bed Alarm for LTC	\$531,322
Fraser Health Authority	Vena Medical	Advanced Stroke Solution - Balloon Distal Access Catheter (BDAC) & MicroAngioscope	\$349,000
Shared Health Manitoba	PolySense Solutions	Refrigerated Research Equipment Remote Monitoring	\$142,500
Vancouver Coastal Health	Signal 1	AI Driven Predictive Discharge	\$1,155,030
First Nations Health Authority	InDro Robotics	Drone Transport Initiative to Remote Indigenous Communities	\$1,076,953
First Nations Health Authority	Scispot	Centralized Lab Information System (LIS)	\$290,728
Virtual Health Hub	Luxsonic Technologies Inc.	Virtual Radiology for Mobile Remote Diagnostic Imaging	\$250,000
Yukon Hospital Corporation	Lime Health	Patient Experience Survey Platform	\$205,000

NEW PROJECTS LAUNCHED IN 2024-2025

ATLANTIC

On average, the CAN Health Network funds \$100,000 per commercialization project. The total project budget also includes in-kind and partner contributions.

EDGE	Company	Project Description	Project Budget
IWK Health Centre	Virtual Hallway	Genomics - Virtual Hallway	\$503,000
Newfoundland and Labrador (NL) Health Services	TxtSquad	TxtSquad - Bariatric Surgery	\$187,500
Newfoundland and Labrador (NL) Health Services	Virtual Hallway	Nurse Practitioner Referrals to Specialist	\$524,786
Newfoundland and Labrador (NL) Health Services	Seafair Capital	DischargeHub	\$532,194
Shannex	Tochtech	Sleep tracking technology to improve resident safety	\$241,740
Vitalité Health Network	Lime Health (Lime Santé)	Patient Experience Survey	\$80,035

NEW PROJECTS LAUNCHED IN 2024-2025

QUEBEC

On average, the CAN Health Network funds \$100,000 per commercialization project. The total project budget also includes in-kind and partner contributions.

EDGE	Company	Project Description	Project Budget
Centre Hospitalier de l'Université de Montréal (CHUM)	Petal Health	Schedule Management for Pharmacy Assistants	\$112,315
Centre Hospitalier de l'Université de Montréal (CHUM)	Traferox Technologies	Ex-vivo Lung Perfusion	\$1,359,328
CISSS de la Montérégie-Ouest	CoeurWay	Use of AI to optimize clinical documentation	\$326,810
CIUSSS Centre-Ouest-de-l'île-de-Montréal	Vitr.AI	Phone Triageing with AI	\$250,000
Le havre du faubourg (Groupe Beaumier)	Josephine	Non-intrusive monitoring system for seniors	\$374,251

11 LOOKING AHEAD

LOOKING AHEAD

The CAN Health Network is uniquely positioned to help Canada lead the new health care economy - by turning high-potential Canadian innovations into real-world solutions that drive economic growth and improve care.

Demand has never been higher, with more health care organizations eager to join the Network and adopt made-in-Canada technologies. As health systems across the globe look for scalable, trusted solutions, the world needs more Canadian entrepreneurship.

As we enter this next year, we are focused on helping more companies scale, responding to increased demand, supporting long-term sustainability, and unlocking the full potential of Canadian innovation, both at home and on the world stage.

We will continue to:

ACCELERATE ADOPTION OF HOMEGROWN INNOVATION

The Network will strengthen its role in enabling faster commercialization and uptake of Canadian-made technologies. By fostering collaboration across both public and private partners, we aim to streamline access to the market and drive meaningful procurement outcomes.

ADVANCE CROSS-COUNTRY CONNECTIVITY

We are committed to strengthening cross-country connectivity by actively bringing Edge partners together through our work. From hosting our Annual Conference to sharing project results and success stories through our platform, we're creating consistent opportunities for connection, visibility, and collaboration. These efforts are helping to deepen relationships across the Network and build alignment around common priorities. By fostering a stronger sense of community and shared purpose, we're enabling innovation to take root and grow in every region of the country.


STRENGTHENING THE PATH TO SUSTAINABILITY

With an eye toward the future, we are pursuing new revenue streams and investment opportunities that align with our values. This includes expanding our partnerships and diversifying funding sources to ensure the continued growth and independence of the Network.

THANK YOU

The CAN Health Network would like to thank the Government of Canada for its ongoing support and for enabling us to drive Canadian innovation across the country and create economic prosperity for all.

Canada 

 Innovation, Science and
Economic Development Canada



canhealthnetwork.ca